

An aerial photograph of a coastline, showing a mix of deep red and blue water. The red water is on the left side, and the blue water is on the right. The land is visible in the center, with a dark, forested area. The overall scene is a natural landscape with a strong color contrast between the water.

OLICARGO
TRANSPORT & LOGISTICS



**Ready to TRANSPORT
your BUSINESS as far as
your ambition determines!**



6	About Us
7	Our History
8	Where We Are
17	Services
18	Air Freight
19	Ocean Freight
20	Road Freight
22	Contract Logistics
24	Project Cargo
25	Consulting
25	Customs Clearance
26	Industries
28	What Distinguishes Us
29	Our DNA
32	Values and Policies
33	Contacts

INDEX



“

Success is not for ordinary people, but for those who have attitude, will and madness to get out of the comfort zone and seek to achieve dreams, even if it means going to Mars... I'M IN!

PAULO SALGADO, CEO
GLOBAL MANAGEMENT & SPONSORING

“

Easy may be the safest, but tough is much more exciting. The challenge, the adrenaline and the pride felt in each accomplished mission are our greater achievement and our best brand image!

MIGUEL SILVA, MANAGING PARTNER
GLOBAL MANAGEMENT & SPONSORING



380
employees

150.000
sqm warehouse
space

**more
than 747**
cities, ports
and airports

**more
than 190**
countries
networking

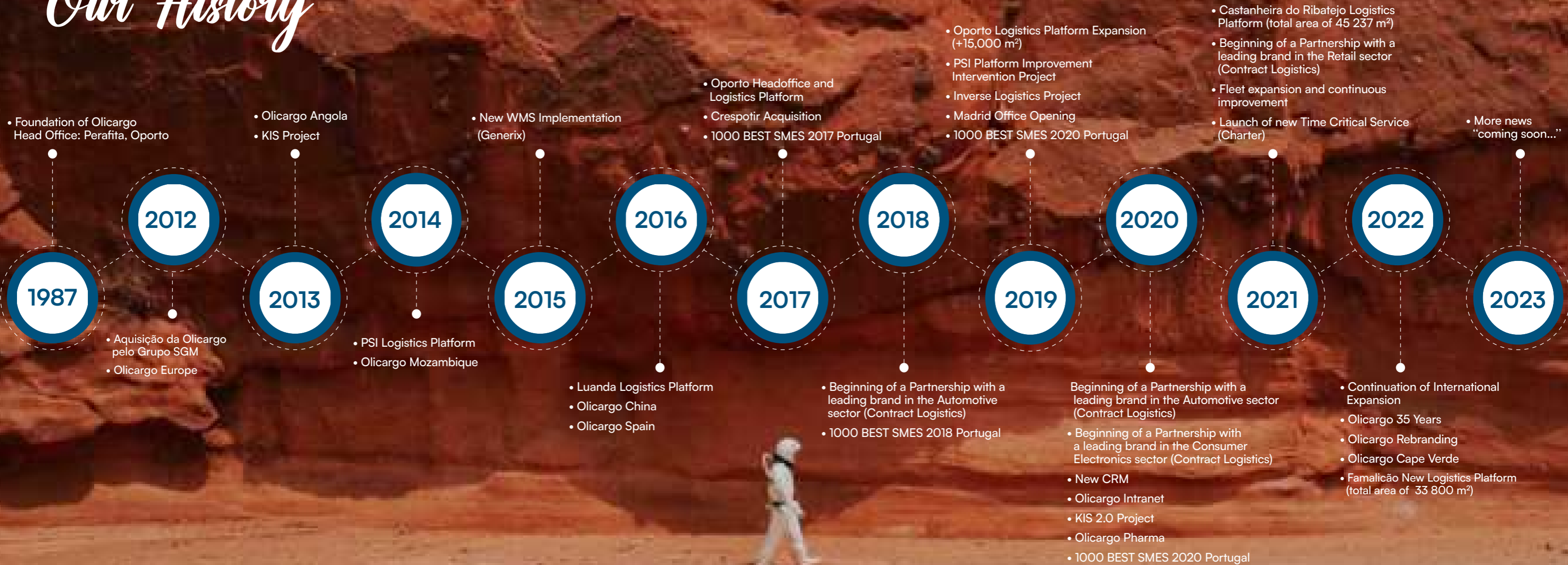
About Us

We are proudly a **Logistics Operator** of national and international reference, in permanent growth and evolution. This is already an achievement that we deeply thank to all the partners who have helped us to get here and who will continue to make us dream and, most importantly, make it happen.

Therefore, these are the reasons that daily make us continue to believe and invest in a sector where we are not just another one...

- Business is about people and relationships of trust;
- Each service provided is an experience and not just a mere technical operation and a financial transaction;
- Only with Happy and Motivated People, to whom we give Freedom with Responsibility, we can provide the premium and differentiated service that ensures the loyalty of our Partners;
- Only by continually investing in infrastructure, equipment and cutting edge technology/ information systems, we will be able to stay one step ahead as a response to an increasingly unpredictable and demanding market;
- We don't aim to be perfect, but we do have a much more valuable desire: **TO BE YOUR LOGISTICS PARTNER OF CHOICE!**

Our History



Where We Are

Since the beginning we have always been aware of the requirements and specificities of the Transport and Logistics sector and that we intended to be effectively a differentiated and reference Logistic Operator, not only nationwide but worldwide. For these reasons we decided that investing in international expansion, in strategic business geographies, should be a priority in our action plan.

An expansion that began in **ANGOLA**, followed by **MOZAMBIQUE**, **CHINA**, **SPAIN** and finally **CAPE VERDE**. With an increasingly solid and successful positioning in these countries, we have never neglected the nationwide expansion and continuous improvement. Some examples are: the recent improvement intervention in our Logistics Center in **PÓVOA DE SANTA IRIA**, the expansion of the warehouse area of our **HEAD OFFICE in OPORTO** and the installation in two modules of the innovative **NORTH LISBON LOGISTICS PLATFORM** and the **NEW LOGISTICS PLATFORM**, in **FAMALICÃO**. In addition, we also have an office and a warehouse area in **COVILHÃ**.



 HEADQUARTERS OPORTO, PORTUGAL



HEADQUARTERS OPORTO, PORTUGAL

78 000 m²
GLOBAL AREA

15 000 m²
PALLET STORAGE

20 000 m²
WAREHOUSE AREA

34
LOADING DOCK

2 000 m²
OFFICE AREA

(SQUARE METERS)





 **LISBON PÓVOA DE SANTA IRIA**

48 000 m²
GLOBAL AREA

15 000 m²
PALLET STORAGE

20 000 m²
WAREHOUSE AREA

18
LOADING DOCK

1 600 m²
OFFICE AREA

(SQUARE METERS)



 PLLN NORTH LISBON LOGISTICS PLATFORM



PLLN NORTH LISBON LOGISTICS PLATFORM

45 237 m²
GLOBAL AREA

41 633 m²
WAREHOUSE AREA

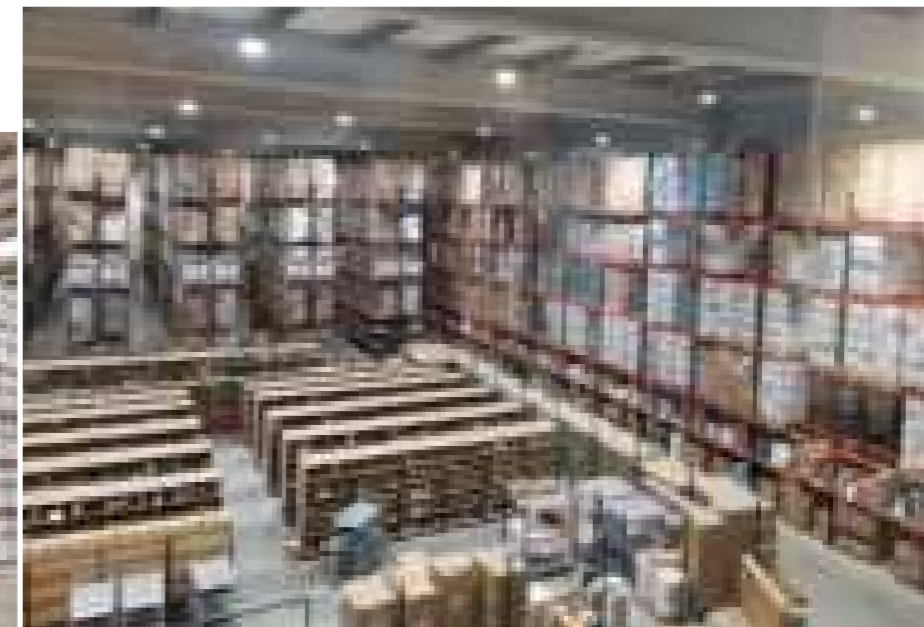
56
LOADING DOCK

3 538 m²
OFFICE AREA

16 000 m²
OCCUPIED AREA
(MAY 2021)

FRACTIONS A AND B

(SQUARE METERS)





LOGISTICS PLATFORM RIBEIRÃO

67 000 m²
GLOBAL AREA

33 800 m²
WAREHOUSE AREA

72
LOADING DOCK

1 000 m²
OFFICE AREA

10 000 m²
SQ. M SPECIALIZED
FOR E-COMMERCE

45.000 PALLETS
OF STORAGE CAPACITY



Services

We are here for you, on a global scale, 365 days a year, because true Partners don't take breaks ... Present us the challenge. We give you the solution!



**Air
Freight**



**Ocean
Freight**



**Road
Freight**



**Contract
Logistics**



Consulting



**Project
Cargo**



**Customs
Clearance**



**Air
Freight**



SERVICES

- Standard
- Express
- Priority
- Intermodal
- Charter Service
- Door to Door
- Chartering
- Parcel Chartering

CARGO

- General
- Dangerous Goods (DG / HAZMAT)
- Perishable
- Live Animals
- Temperature Control
- Project Cargo
- Pharma

PREFERENTIAL RELATIONS WITH:





Ocean
Freight



SERVICES

- FCL (Full Container Load)
- LCL (Less than Container Load)
- NVOCC (Non-Vessel Operating Common Carrier)
- Intermodal
- Break Bulk
- Warehousing and Cargo Consolidation
- Ro/Ro
- Conventional
- Parcel Chartering

CARGO

- General
- Dangerous Goods (DG / HAZMAT)
- Perishable
- Temperature Control
- Project Cargo
- Pharma

CONTAINER TYPE

- Dry Van, Reefer, Open Top, Flat Rack, Mafi, Garments on Hanger (GOH), Shipper Own Container (SOC)

PREFERENTIAL RELATIONS WITH:





Road
Freight



Regular Lines

Default Transit Time for the European leading industrial countries

SERVICES

- Direct Groupage: Economic/ Priority Express
- Full Truck: Economic/ Priority (Two Drivers)

CARGO

- General
- Dangerous Goods (DG / HAZMAT)
- Temperature Control
- Garments on Hanger

OWN TRANSPORT FLEET

PRIVILEGED COMMERCIAL PARTNER OF THE AIRLINES:





Road
Freight





**Contract
Logistics**



SERVICES

WAREHOUSE MANAGEMENT

- Multi-Client Warehousing
- Dedicated Warehousing
- Industrial Logistics

SUPPLY CHAIN MANAGEMENT

- Flexible Supply Chains for Dynamic Business
- Integration between Multiple Supply Chain Elements
- Expert Team Dedicated to Logistics Excellence
- Information Systems: Accuracy and Visibility throughout the Logistics Chain

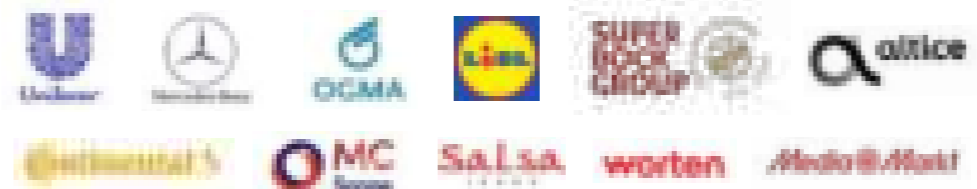
TRANSPORT MANAGEMENT

- Domestic & International Distribution
- Real-time tracking on the portal available online KIS IOD and POD

PROMOTIONAL LOGISTICS

- POS and Events Management
- Stand Assembly and Dismantlin
- Warehouse Management and Transport
- Value-add Services

PREFERENTIAL RELATIONS WITH:





Contract
Logistics





Project
Cargo



Do you have a cargo that does not comply with the conventional typology and measures? Do you need a Custom Transport Service? We do this study for you and we also present you the best solution in response to your needs.

METHODOLOGY:

- Customer project follow-up and counselling, provided by our team;
- Coordination and development of detailed studies for all stages of transport (road, sea and air);
- Verification and control of all critical steps (stowage, seafastening and documentation);
- Conducting physical, technical and legal feasibility studies (Site and Road Survey);
- Development and preparation of the packaging and anchorage points that are necessary to ensure the safety of the transport and the good condition of the cargo;
- On-site support (when relevant and worldwide): from loading to unloading.



Consulting



Customs Clearance



CONSULTING

More than transporting your cargo from point A to point B, we want to be **YOUR LOGISTICS PARTNER**, in the full sense of the word “partnership”:

- Develop a close and solid relationship of trust;
- Live your business to the fullest and be seen as another member of the team and not a mere service provider;
- Walk side by side with you, follow your evolution and work together in a perspective of continuous process improvement and optimization;
- Develop as a team the best service solutions according to your needs and requirements, guiding, supporting and contributing to your success and growth!

CUSTOMS CLEARANCE

We are aware that the bureaucratic part is often one of the most complex aspects of a transport and what more time and energy consumes. For this reason you can count on a team of experienced and specialized professionals always available to simplify your process.

- Management of the entire administrative process: streamlining of all necessary formal and bureaucratic customs procedures (according to official methodologies);
- Execution of all mandatory procedures inherent in the Import and Export Operations of cargo, as well as other destinations and customs regimes applicable to the cargo, in accordance with the legislation in force in each country (in the name and/or on behalf of economic operators through the Customs Authorities);
- Follow-up, supervision, control and management, from a technical, practical and legal point of view, with the rigor and professionalism in order to provide a premium service.

Industries

Let us know about your activity,
we will let you know the best logistics solution
to leverage the success of your business!



Industries

Because each Industry has its specificities and requires different knowledge and technical skills, you can count on an experienced and multidisciplinary team composed by sub-teams specialized in vertical markets and industries.

Here are some of the sectors in which we stand out for providing a differentiated and value-added service:

- **RETAIL**
- **FOOD & BEVERAGE**
- **METALWORKING**
- **TECHNOLOGY**
- **CONSTRUCTION & ENGINEERING**
- **AEROSPACE**
- **AUTOMOTIVE**
- **FASHION**
- **PHARMA & HEALTHCARE**
- **FURNITURE**
- **ENERGY**
- **CHEMICALS**
- (...)



KIS, KEEP IT SIMPLE

What Distinguishes Us

We believe that people are the most valuable asset of any organization. However, in order for them to perform their functions more efficiently and effectively and, consequently, provide a service of excellence, they need the right tools.

Convinced of this fundamental premise, we continuously invest in the acquisition of cutting-edge technology and we also invest uninterruptedly in the internal development of differentiating information systems, both in terms of communication/internal interaction tools, communication and provision of information outwards.

An example of this is our Information System: **KIS (KEEP IT SIMPLE)**, 100% Customer-oriented and totally user friendly. Through this system, you can monitor your projects at the moment, by accessing information as relevant as:

- **CARGO TRACKING** Track & Trace;
- **SERVICES HISTORICAL;**
- **RELEVANT DOCUMENTS** BL, AWB, POD, INVOICES, etc;
- **FULL STATEMENT** Associated with the Account;
- **CHAT** for exposing questions, real-time feedback.



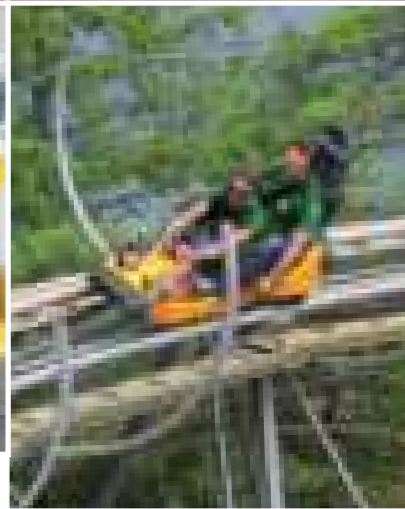
Our DNA

OLICARGO DNA is composed by a set of characteristics that make us unique:

- Ability to dream without limits and even greater will to make it happen;
- Ambition, determination, enthusiasm, passion, attitude and, above all, humility to make it possible;
- Commitment and unconditional respect for the principle “Freedom with Responsibility”;
- Integrity, loyalty, ethics and confidentiality.

These values are daily mirrored in the way of being of our **PEOPLE**. In order to make this reality always present in our daily lives, we involve all hierarchical levels of the structure through a permanent Communication and Interaction Policy, promoting an **ORGANIZATIONAL CULTURE** based on a Policy of:

- **Quality;**
- **Environmental and Social Responsibility;**
- **Sustainability;**
- **Health and Safety;**
- **Code of Conduct and Ethics in Business Relations;**
- **And the most important of all, Happiness!**



**We dreamed, we believed and we made it happen.
Thank you Team, Thank you Partners.**



Statutes and Certifications

**CSC
Agent**

**IATA
Agent**

**FIATA
Agent**

**APAT
Agent**

**ALN
Agent**

**JCTRANS
Agent**

Contacts

PORTUGAL

PORTUGAL HEADQUARTERS (OPORTO)

Avenida do Empreendedor, 1315
Bougado (São Martinho e Santiago)
4785-428 Trofa
Phone: +351 252 025 200

[GoogleMaps](#)

FAMALICÃO

Avenida da Indústria, 510
4760-725 Ribeirão
Famalicão, Braga

[GoogleMaps](#)

LISBON (PSI)

Lugar dos Caniços
2626-509 Póvoa de Santa Iria
Phone: +351 219 409 840

[GoogleMaps](#)

LISBON (PLLN)

Plataforma Logística Lisboa Norte
Rua da Azenha da Fruteira
Castanheira do Ribatejo
Vila Franca de Xira
Phone: +351 913 589 639

[GoogleMaps](#)

COVILHÃ

Parque Industrial do Tortosendo
Rua g, Lote 57 - b
6200-823 Covilhã
Phone: +351 275 098 980

[GoogleMaps](#)

ANGOLA

LUANDA

Rua João de Barros, 72
Ingombota Luanda
Phone: +244 935 803 846

[GoogleMaps](#)

MOZAMBIQUE

MAPUTO

Rua José Mateus 419
Bairro Polana
Phone: +258 846 419 920 /
+258 827 033 199

[GoogleMaps](#)

CHINA

SHANGAI

505, lote 1 AIJIA International Mansion, 288
Wuhua Road
Post Code: 200086
Hongkou District
Phone: +86 136 1197 4614

[GoogleMaps](#)

SPAIN

MADRID

Calle Velázquez, 10
1a Planta 28001 Madrid, Spain
Phone: +34 917 818 022

[GoogleMaps](#)



WWW.OLICARGO.COM

An aerial photograph of a coastline, likely in the Red Sea, showing a mix of deep red and blue water. The land is visible as a dark, textured strip along the coast. The overall scene is dynamic and visually striking.

OLICARGO
TRANSPORT & LOGISTICS